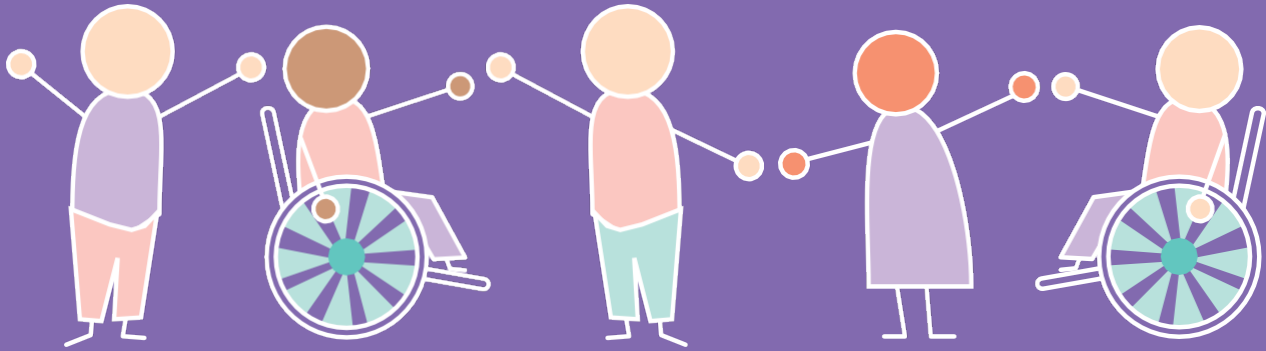




# SIES

Statewide Inclusive  
Education Services



## PARENT FORUMS

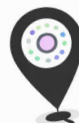
Presented by the Statewide Inclusive Education Services (SIES), parent forums are a safe and supportive space for families to gather information and resources to support your child's education.



### JOIN US IN BERRI TO HEAR ABOUT:

- How to manage anxiety, separation and change
- Supporting your child through key educational transitions
- Information from the Berri NDIS Local Area Coordinator and Community Engagement Facilitator
- SIES/ITL resources, services and supports

ROAD  
TRIP!



### WHEN:

Wed 20<sup>th</sup> May 2026  
10.30am to 12.30pm  
Optional - Refreshments &  
networking 12.30 to 1.30



### WHERE:

Venue to be confirmed  
BERRI SA (pending registrations)

*Register here*



8235 2871



[Education.ParentForum@sa.gov.au](mailto:Education.ParentForum@sa.gov.au)



[www.sies.sa.edu.au/parent-forum/](http://www.sies.sa.edu.au/parent-forum/)



Government of South Australia  
Department for Education

