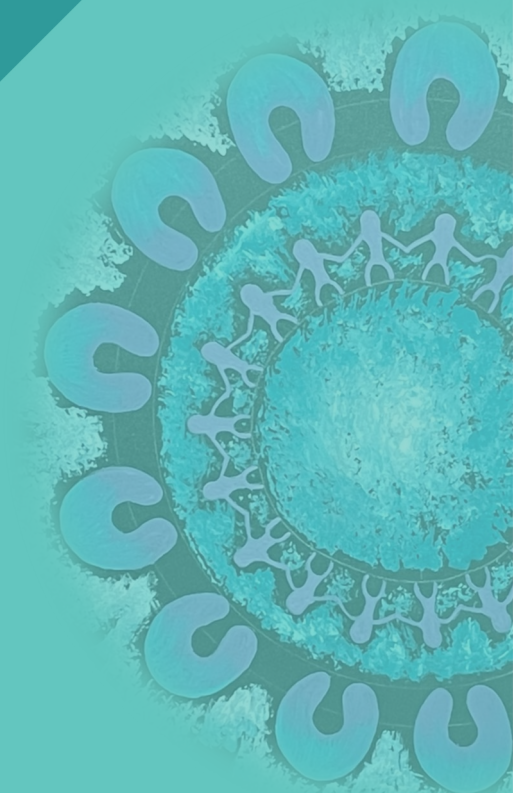


# Rhoni McFarlane

**Director Inclusive Teaching & Learning**

June 2023



**Government of South Australia**  
Department for Education

# A song of hope - Kath Walker (Nunukul woman)

Look up, my people,  
The dawn is breaking  
The world is waking  
To a bright new day  
When none defame us  
No restriction tame us  
Nor colour shame us  
Nor sneer dismay.

To our fathers' fathers  
The pain, the sorrow;  
To our children's children  
the glad tomorrow.



# Darren Humphrys

**A/Executive Director, Support and Inclusion**

Oversees:

Inclusive Teaching and Learning

Engagement and Wellbeing

Student Support Services



# Autism Inclusion Teacher Evaluation

ACER - Australian Council *for* Educational Research

To what extent does the service delivery model result in improvements in AIT's knowledge, understanding and skills related to the education of autistic children?


What factors facilitate or impede the achievement of program outcomes related to the AIT's role

# Supporting schools



# Supporting schools

## Inclusive Planning for Improvement

- Building a team to work with schools in looking at how they use their funding in supporting students
  - Helping schools to understand what resources and services are available to them
  - Looking at IESP applications with schools
- 
- A teal-colored triangle is located in the bottom right corner of the slide, pointing towards the top right.

# Supporting schools

## Process changes for IESP

- Shifting a few of the rules around IESP
  - Automatic funding rules, so that schools do not have to apply
  - Transition funding boosts

# Since we last met

Department of Human Services



Topic 7: Education, employment and the workforce

Charter starts with the Department for Education

## SA Autism Strategy: consultation timeline





## A message from Martin Westwall Chief Executive of the Department for Education



[Personalised learning for schools and preschools - YouTube](#)

“Sometimes we have to tailor learning approaches to needs of individual children and students to help them engage in their learning and thrive”

Martin Westwall, Chief Executive

A teal-colored triangle is located in the bottom right corner of the slide, pointing towards the top right.

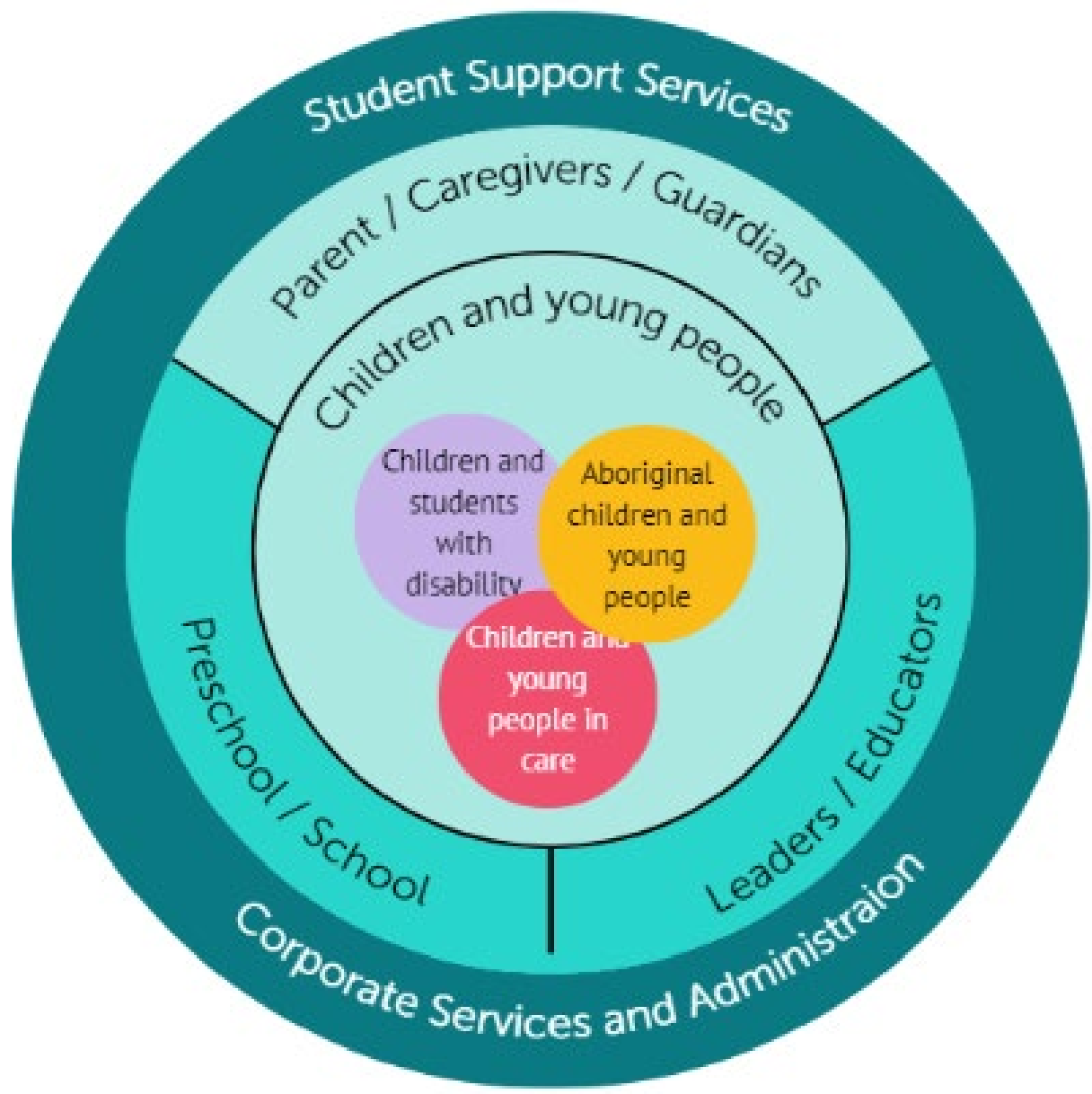


# Human Centred Design

Human-centred design is an approach to problem solving that puts the people we are designing for at the heart of the process.

The process

- identifies problems and opportunities
- generates a wide variety of ideas
- translates some of these ideas into prototypes
- shares prototypes with the people we're designing for to gather feedback
- works towards a solution



1

**DISCOVER**

Research to understand needs and behaviours.



2

**DEFINE**

Re-frame the problem based on new understanding.



3

**DEVELOP**

Co-design idea generation and exploration.



4

**DELIVER**

Test ideas with audiences. Iterate based on findings.



**DISCOVER**

16 weeks

**DEFINE**

8 weeks

**DEVELOP**

6 weeks

**DELIVER**

12 weeks

We are here

**'Looking in' research**

Understand the needs and objectives of internal stakeholders.

**Sensemaking**

Identify problem statement/ design considerations.

**Co-Design Workshops**

Multiple co-design ideation workshops. Engage with additional sites and stakeholders yet to be engaged.

**Co-Design Workshops**

Multiple co-design prototyping workshops. Engaging with additional sites and stakeholders as well as a selection of those previously engaged.

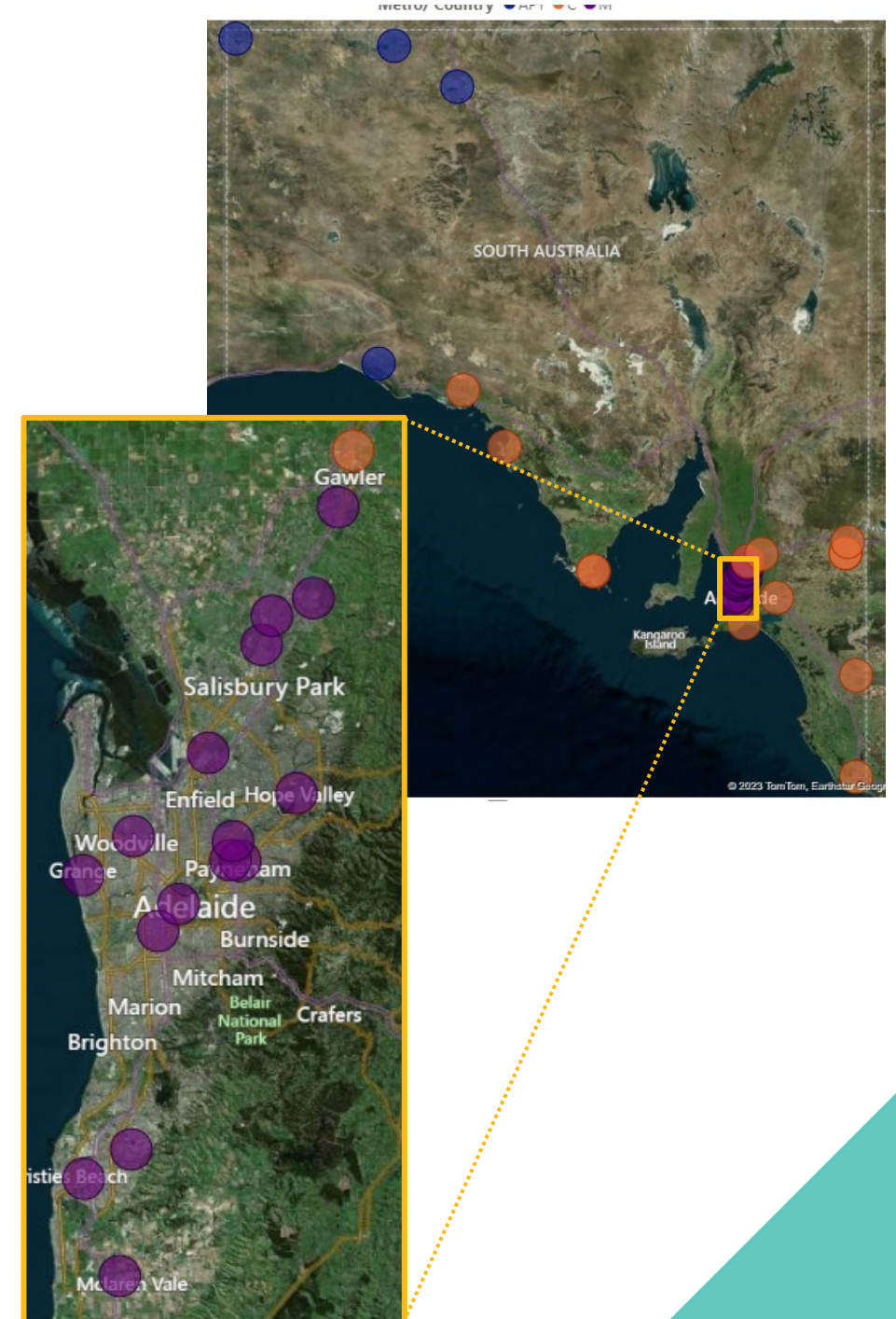
**'Looking out' research**

Understand students, parent/guardian/carers, teachers and support staff needs, expectations and experiences.

# Site visits

Adelaide High School  
Bains Road Preschool  
Bordertown Primary School  
Christies Beach HS & Sth Voc College  
Elizabeth North Preschool  
Ernabella Anangu School  
Gawler and District College B-12  
Gordon Education Centre  
Grange Primary School  
Hewett Primary School  
Indulkana Child Parent Centre  
Kaurna Plains School  
Kirton Point Children's Centre  
Klemzig Primary School  
Koonibba Aboriginal School  
Kurralta Park Community Kindergarten  
Le Fevre Preschool

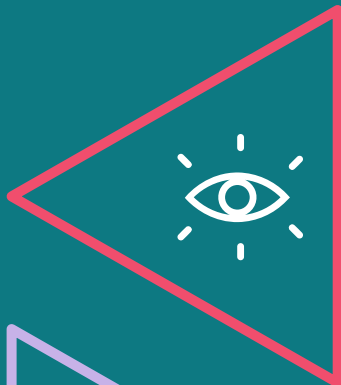
Loxton Preschool Centre Inc  
Loxton Primary School  
Mawson Lakes Preschool  
McLaren Vale Primary School  
Modbury Special School  
Murray Bridge High School  
Open Access College  
Pipalyatjara Anangu School  
Playford Primary School  
Port Elliot Kindergarten  
Port Lincoln Primary School  
Riverland Special School  
Streaky Bay Area School  
The Briars Preschool  
The Grove Education Centre  
Yalata Anangu School



1

## DISCOVER

Research to understand needs and behaviours.



2

## DEFINE

Re-frame the problem based on new understanding.



3

## DEVELOP

Co-design idea generation and exploration.



4

## DELIVER

Test ideas with audiences. Iterate based on findings.



# What's next?



Continue Discover phase by 'Looking Out' (Term 2 - 2023)

Workshops and interviews with corporate staff, children and young people, parents/guardians/carers, educators, and leaders.



Define problem statements (Term 2 - 2023)

Reframe the problems based on new understanding and make sense of what we have heard



Ideation Workshops (Term 3 - 2023)

Present the problem statements in co-design idea generation workshops with corporate staff, educators, and leaders.



Solution Prototyping (Term 3 & 4 - 2023)

Iterative co-design process of developing and testing the solution with corporate staff, children and young people, parents/guardians/carers, educators, and leaders.

# Come have a chat







**Government  
of South Australia**

---

Department for Education